

Carrier Loading System Single (CLSS)

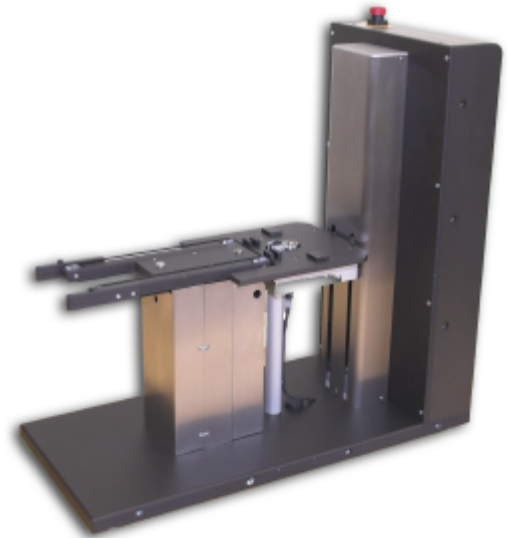
The **Carrier the Loading system - single** is used for the automatic loading and unloading of wafer out/in the wafer cartridges.

The wafer cartridge will proceed in the height for the removal of the wafer.

Over a belt the lowest wafer is taken in each case out of the cartridge and can be processed by hand.

The **CLSS** recognizes automatically via sensors whether a wafer is contained in the position.

Loading takes place exactly the other way around - first the 25. wafer is loaded afterwards the 24th etc.. One wafer size can be used - alternatively 5"/6" or 6"/8" per equipment.



Electrical connection data

Supply voltage	110 – 240 V
Capacity maximally	200 Watt
Frequency	50/60 Hz
Safety class system	I
Connecting cable	US, Euro, UK or Japan
Connection	Cold device plug 3-pin

Generally

	CLSS 5+6"	CLSS 6+8"
Width	280 mm	280 mm
Height	510 mm	570 mm
Depth	480 mm	600 mm
Weight	about 26 kg	about 33 kg

Order remarks

	30040	30041
	CLSS 5+6"	CLSS 6+8"